



GAT MONTHLY MEMBERSHIP PROGRESS REPORT

Results as of: 1/31/2023

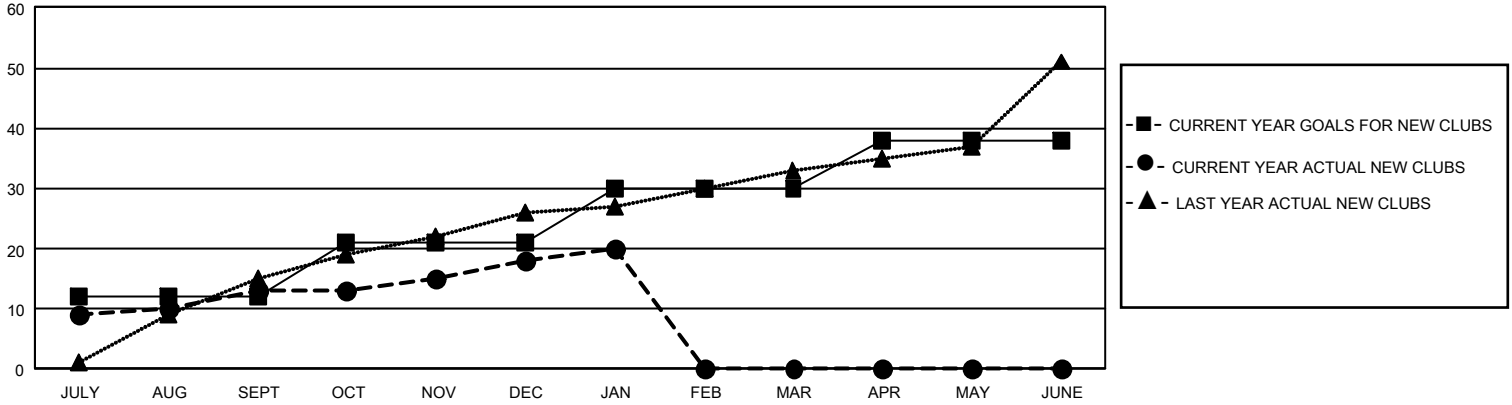
GMT Constitutional Area 8, Group B

REPORT DOES NOT INCLUDE CLUBS IN UNDISTRICTED AREAS.

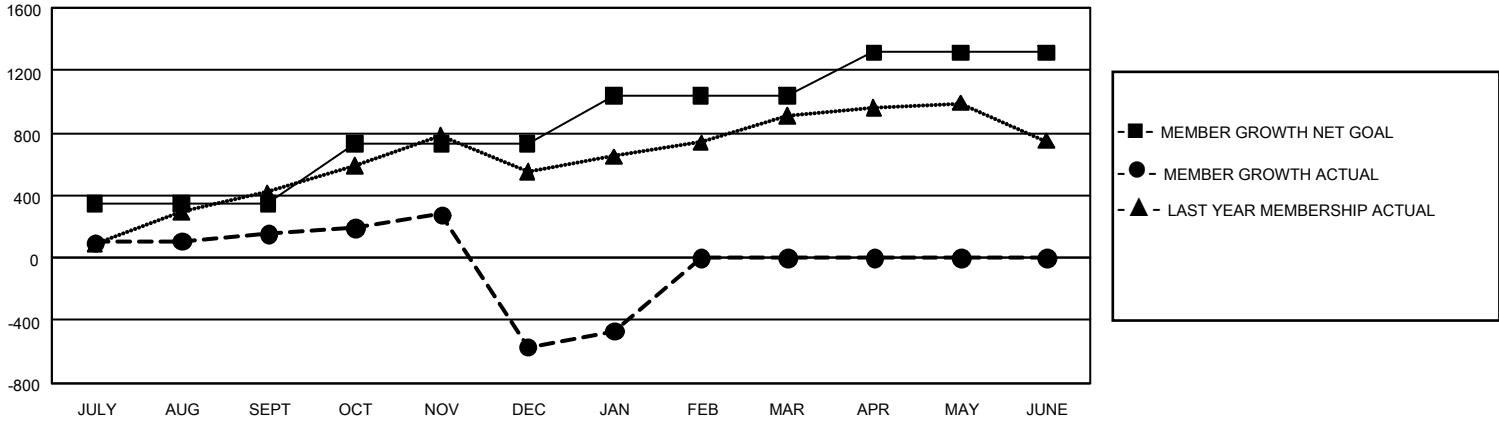
Clubs			
RESULTS FOR 2022-2023			
QUARTER	NEW CLUB GOAL	NEW CLUBS	DROPPED CLUBS
JULY/AUG/SEPT	36	13	8
OCT/NOV/DEC	27	5	30
JAN/FEB/MAR	27	2	2
APR/MAY/JUNE	24	0	0

Members			
RESULTS FOR 2022-2023			
QUARTER	MEMBER GROWTH NET GOAL	MEMBER GROWTH ACTUAL	DROPPED MEMBERS ACTUAL (including transfers)
JULY/AUG/SEPT	350	546	355
OCT/NOV/DEC	380	689	1,353
JAN/FEB/MAR	305	278	124
APR/MAY/JUNE	278	0	0

GOALS AND ACTUAL NEW CLUBS CUMULATIVE



GOALS AND ACTUAL MEMBERS CUMULATIVE



DROPPED CLUBS: 40	254 CLUBS OF 457 ADDED 1 OR MORE NEW MEMBERS	GENDER DISTRIBUTION	
		MALE 6,126 (58.14%) FEMALE 4,409 (41.84%) NON BINARY 0 (0.00%) PREFER NOT TO ANSWER 2 (0.02%)	
DROPPED MEMBERS		TOTAL FAMILY UNIT MEMBERS 848	
DECEASED 26 CLUB CANCELLED 621 OTHER 1,185 TOTAL 1,832	CLICK HERE FOR CUMULATIVE MEMBERSHIP DATA	FAMILY MEMBERS PAYING HALF DUES 478	